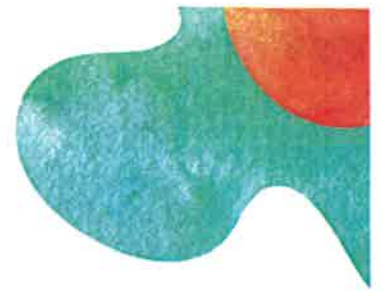


OLDER-EU / Visit Apartment LENA

Scalable housing for a new autonomy



1. Few words about LENA



Logement Evoluatif pour une Nouvelle Autonomie

The Lena apartment is accessible, adapted and scalable to meet the constraints of loss of autonomy, whether due to disability or the consequence of aging. Type T3, the apartment includes several living spaces that reproduce the conditions of a standard habitat with the kitchen, the living room, the bathroom, the bedroom and the office.

Accessibility has been designed for outdoor spaces, common areas and accommodation. Fitted with the “My Home Legrand” environmental control system, all of the housing functions: lighting, roller shutters, heating, air conditioning, visualization of consumption, alarms, video door entry systems, sound distribution are automated and controlled locally or remotely. The accommodation is adapted for universal, intergenerational comfort and taking into account all disabilities and their scalability. Léna makes it possible to integrate, evaluate and demonstrate smart home automation technologies and solutions to ensure autonomy, living comfort, security, surveillance and home assistance. It is also a place of exhibition, information, prevention, advice and training for users and compensation professionals.

1.1 The Lena’s facilities

1.1.1 Outdoor facilities

- Main path from the parking: light with presence detection, securing by removing obstacles
- Specific fittings of the gate and doors (motorisation, automatic opening door, sound beacons, contrasting opening control device, etc.)

1.1.2 Access to the building and common areas

- Identification of the entrance (lighting of the airlock, sound indicators of the entry number, identification and motorization of the entrance door).
- Video intercom communication, letterbox with automated lock control, automatic lighting with presence detection for permanent guidance in the corridors, management of light intensities, automated control of common doors, securing and identification of walking areas, permanent light path by an illuminating handrail on the ground floor.

1.1.3 The apartment’s facilities

- Communication with the exterior Video intercom,
- Security (water flow sensors, smoke detector, visual alert by light flash, fall alert camera, permanent light path in the entrance, light path with presence detection in all rooms
- Motorization and controls (motorized roller shutters, rotary dimmers for lighting management, contrast and night light, controlled power outlets in bedrooms and living room, motorized entrance door, control box for scenario development (lighting management, roller shutters, heating, etc.), motorized kitchen units (main worktop, wall units), thermostatic mixer on central island, retractable mixer and remote control on main worktop, remote control of the hood, doors with brick partition bathroom and living room.

- Hygiene (presence detection on bathroom light points, thermostatic mixer on shower and with extended arm on washbasin, contrasting grab bar and seat in shower area and WC).
- Safety and prevention communication and call (emergencies), falls, urgent needs, food, medication, memory.
- Medical bed with fall and humidity sensors and light beacons.

2. Lena's place in the continuum of services and support

In France, the accompaniment of the elderly has known in recent years a political and operational orientation which tends towards home care.

This political will responds to the majority wish of the French to age at home, in a familiar environment. Many systems are therefore organized around this new paradigm. However, given the issues of high level of dependency, social isolation, etc. not all elderly people can stay at home.

It is within the framework of the service and support continuum that VYV3 sets up a set of establishments and services adapted to the support of the elderly.

The Lena apartment offers a range of services and partnerships within the framework of Léna for compensation. Loss of autonomy, health and aging well at home:

- • Integration, testing and evaluation of technological solutions within the framework of services or partnerships with manufacturers or distributors;
- • Use of Léna for a collaborative project integrating technologies and developing scenarios for autonomy, health prevention, medication, therapeutic education, etc.;
- • Raising awareness and/or initial or continuing training (compensation professionals, natural caregivers, professional caregivers, caregivers, building professionals, communities, etc.);
- • Provision of LENA to carry out communication, promotion, prevention, awareness, training actions.

A certain number of tools have thus been installed in all the rooms of the Residence Les Noisetiers, in experimental rooms in the geriatrics department of the CHU and can be offered as part of the Philemon home care program.

Contacts établissement :

Marie VOISIN

10 rue de la Côte de Bellevue

49000 Angers

Téléphone : 02.41.73.98.78 - Adresse mail : marie.voisin@centich.fr